

Service & Support



Equipment Solutions Guide

Born over 30 years ago as an inkjet service company, service is our backbone. Our team is dedicated to providing the highest quality equipment, software, consumables and customer care in the industry. Please reach out to us for any questions or concerns related to your equipment.

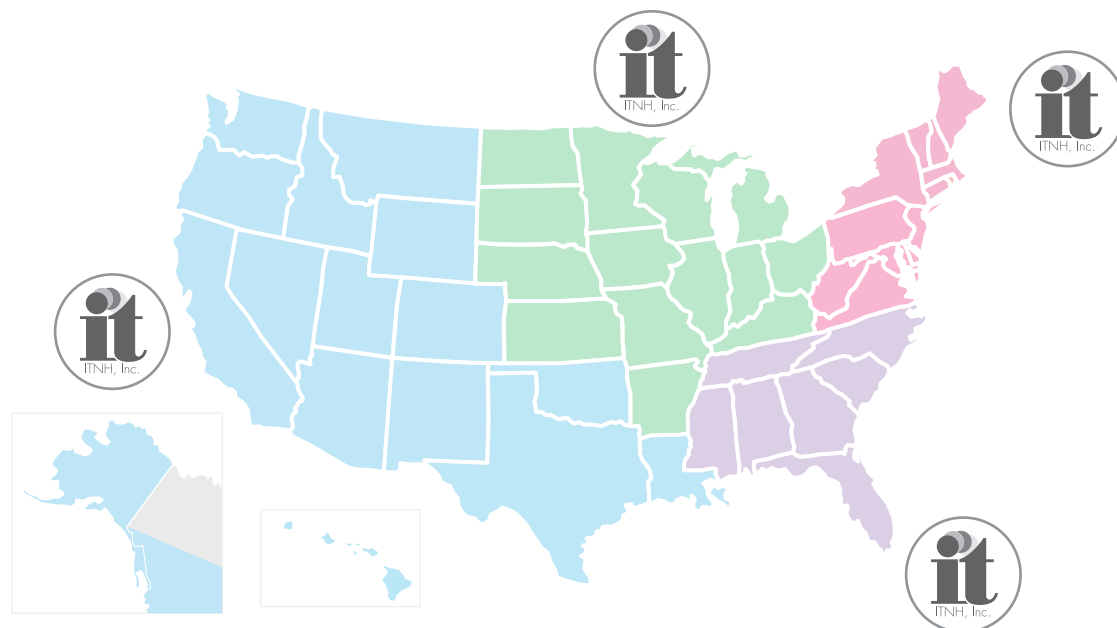
DTF

ITNH & YouTube

This code opens the ITNH YouTube Page! Check out videos on hardware and software support, file setup, application techniques, and more! Please like and subscribe to our channel to stay up to date on all videos to come!



Nationwide Sales & Support



- Product Overview
- When to use DTF Applications
- Key Advantages
- Why Use Mimaki?
- Process Overview



Paul Figucia
North Eastern Equipment
Sales Manager
PFigucia@itnh.com
978-604-9763

Josh Radicchi
South Eastern Equipment
Sales Manager
josh@itnh.com
727-459-7040

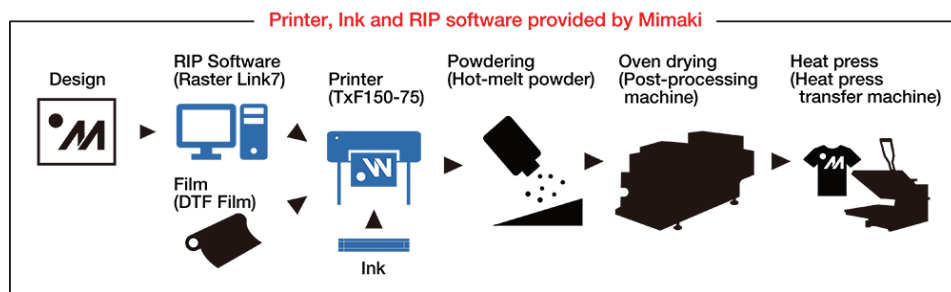
Dan Janssen
Mid-West Equipment
Sales Manager
Dan@itnh.com
815-621-3206

Scott Johnson
Western Equipment
Sales Manager
SJohnson@itnh.com
949-282-4284

The DTF Process

The MIMAKI Solution

Simply put, a DTF printer will print textile pigments (including white) on to a transfer film. The transfer film then continues into the shaker where powder adhesive is applied to the ink and then heat set. Once out of the shaker, the film can then be applied to a product and heat pressed. After a just a few seconds in the press, the ink/graphic is now transferred to your end substrate (like a t-shirt) and you are done!



Supplies You Will Need

DTF Ink (Textile Pigments)
Adhesive Powder
Polyester Transfer Film

Equipment You Will Need

DTF Inkjet Printer
Shaker
Heat Press

Key Advantages of DTF when compared to DTG:

- Much less labor intensive
- No pretreating before printing
- Much better results on synthetics / sports apparel
- Print to many more substrates (see applications)
- Uses much less ink, especially white

When compared to Vinyl Transfers:

- Much less labor intensive, no weeding!
- Much less expensive compared t vinyl film.

Best Applications for DTF



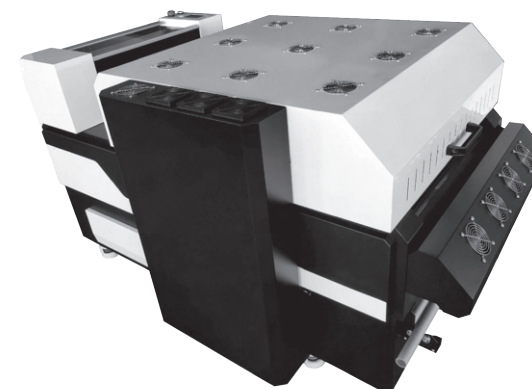
Mimaki TX150-75

Print Width: 31.5"
Ink Colors: CMYK, White, White
Ink Volume: CMYK - 600ml, White - 500ml
Print Heads: 1
Production Speed: 28 sqft/hr



Mimaki TX300-75

Print Width: 31.5"
Ink Colors: CMYK, White x4
Ink Volume: CMYK - 600ml, White - 500ml
Print Heads: 2
Production Speed: 85 sqft/hr



Mimaki Shaker TX-Y6018P

Choose 24" or 31.5" width
220v SP, 30A Electrical requirement
Integrated *Internal* Air Scrubber



ITNH & YouTube

How to do DTF video.



ITNH & YouTube

The DTF SHAKER video.

