

EPSON®
EXCEED YOUR VISION

Distributed by:



National Sales & Support
866-Ink-Jets itnh.com
(465) (5387)



SureColor® S-Series

Epson SureColor S40600

Epson SureColor S60600

Epson SureColor S80600



Solvent Printing. Solved.

At Epson, our goal was to develop a line of solvent-based printers that would significantly outperform anything that had come before them. Working closely with sign makers, Epson engineers developed all-new imaging technology to address the everyday problems associated with lesser-quality sign printers.

Productivity. Reliability. Image Quality.

As a result, our all-new line of solvent printers has dramatic improvements in overall printer reliability, speed and print quality — allowing for incredible levels of production. This new line of signage printers from Epson represents a significant leap forward, helping sign makers on any budget get their work done right and on time.

Introducing the new Epson® SureColor S-Series printer line.

SureColor S-Series

S



© Andre LaRoche

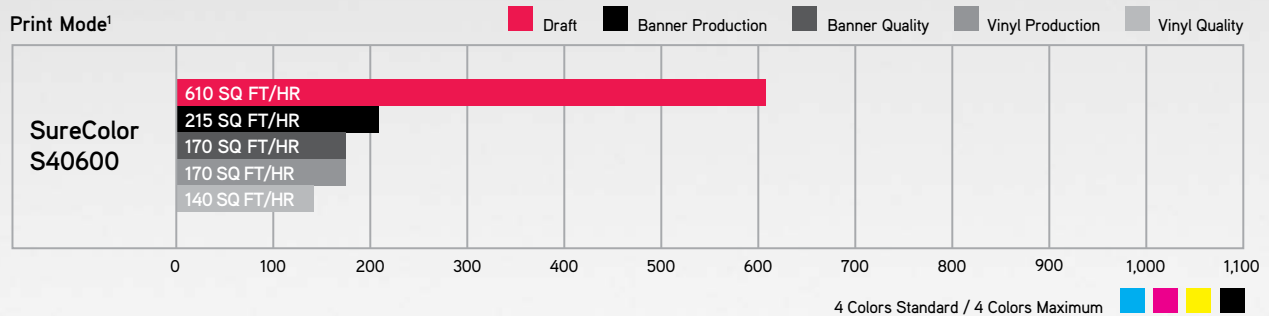
S40

4-Color



Unmatched Value

The 64" SureColor S40600 features newly developed Epson UltraChrome® GS3 4-color solvent ink for outstanding print quality, durability and media compatibility. With an all-new precision media feeding system and high-performance PrecisionCore® TFP® printhead, the SureColor S40600 is capable of producing sellable-quality banners at up to 215 square feet per hour¹, while also producing adhesive vinyl output at up to 170 square feet per hour¹ — making the new SureColor S40600 the ideal entry-level sign printer for print shops of any size.



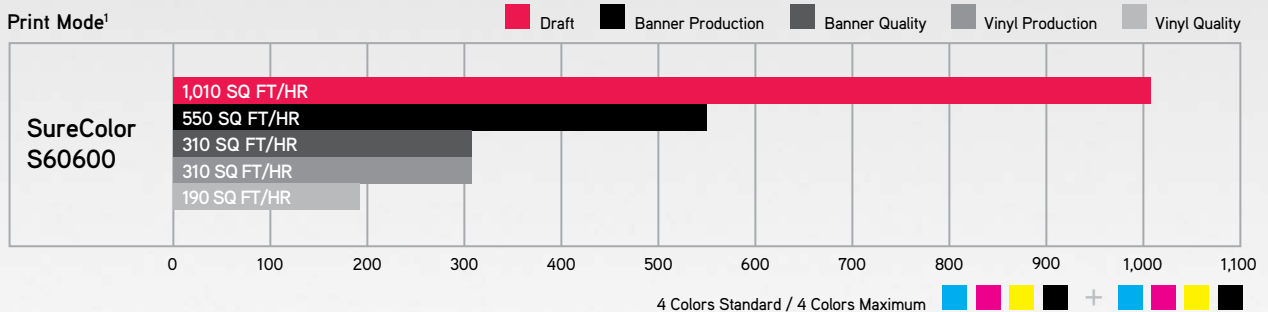
S60

Dual 4-Color



A Performance Benchmark Has Been Set

Utilizing an all-new high-performance dual-array PrecisionCore TFP printhead, the SureColor S60600 is capable of producing sellable-quality banners at up to 550 square feet per hour¹. Newly developed Epson UltraChrome GS3 4-color solvent ink offers outstanding print quality, durability and media compatibility, and delivers near-photographic quality at the highest of production speeds, making the SureColor S60600 one of the most productive sign printers ever developed.



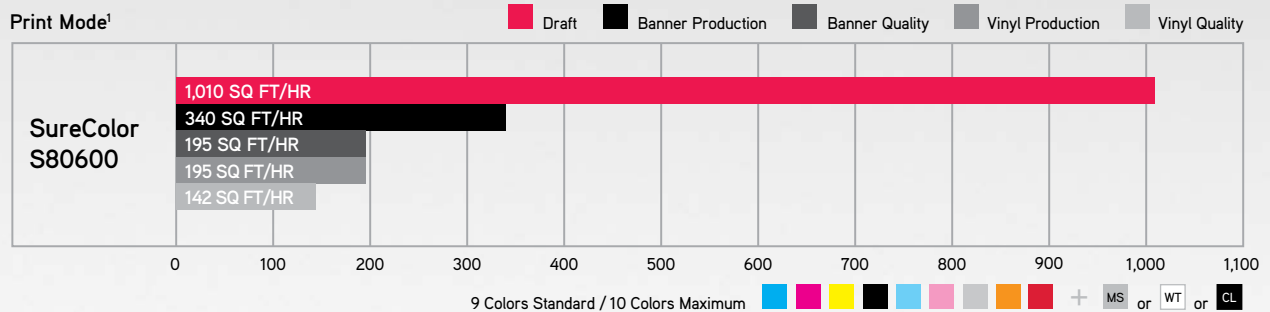
S80

10-Color



True Photographic Signage

The pinnacle of signage printing, the SureColor S80600 features newly developed Epson UltraChrome GS3 9-color solvent ink — including an all-new Red solvent ink, along with the option for White or Metallic Silver ink — for outstanding photographic print quality, durability and media compatibility. With an all-new precision media feeding system and high-performance dual-array PrecisionCore TFP printhead, the SureColor S80600 is capable of producing sellable-quality adhesive vinyl output at up to 195 square feet per hour¹ — perfectly combining commercial-level productivity with photographic-quality output.



S-Series

Product Comparison Chart

Features

Feature	SureColor S40600	SureColor S60600	SureColor S80600
Printer Width	64"	64"	64"
Printhead Configuration	PrecisionCore TFP	Dual-array PrecisionCore TFP	Dual-array PrecisionCore TFP
Ink Technology ²	Epson UltraChrome GS3	Epson UltraChrome GS3	Epson UltraChrome GS3 with Red
Maximum Color Configuration	4-Color	Dual 4-Color	10-Color
Base Color Configuration	CMYK	CMYK + CMYK	CMYK + LC + LM + LK + OR + R
Optional Color Configuration	N/A	N/A	White or Metallic Silver
Maximum Ink Capacity per Color	700 mL	1,400 mL (700 mL x 2)	700 mL
Same-day Lamination ³	Yes	Yes	Yes
Production Speed ¹ — Banner & Scrim	215 sq ft/hr	550 sq ft/hr	340 sq ft/hr
Production Speed ¹ — Adhesive Vinyl	170 sq ft/hr	310 sq ft/hr	195 sq ft/hr
Max. Print Speed ¹ — White or Metallic Silver	N/A	N/A	135 sq ft/hr (WT) or 43 sq ft/hr (MS)
Additional High-speed Dryer	Optional	Standard	Optional
Standard Connectivity	USB 2.0 & Gigabit Ethernet	USB 2.0 & Gigabit Ethernet	USB 2.0 & Gigabit Ethernet
Standard Limited Warranty	1-Year On-site	1-Year On-site	1-Year On-site
Rewards Program	Yes	Yes	Yes

¹ All print speeds shown are based upon print engine speed only, in Bi-directional Mode. Total throughput times depend upon front-end RIP, file size, printer resolution, ink coverage, networking, etc.

² The printer is designed to use only Epson ink cartridges and not other brands of new or refilled cartridges, or other brands of ink or bulk ink systems. Using Epson cartridges is important for reliable performance and high image quality.

³ Results based on Epson and Avery internal lamination testing at six hours after printing. Your results may vary based on environmental conditions, media type used, ink density, and other factors. For warranty information, please refer directly to the media and laminate manufacturer websites.

⁴ For one printer using the standard ink set in a room of at least 180 m³ with a minimum ventilation coefficient of 2.2. For more information, see the MSDS sheets at proimaging.epson.com

⁵ The printhead is a maintenance part which the user is responsible for replacing when necessary. However, Epson covers head replacement while the printer is under the Epson Preferred™ Limited Warranty (original in-box) and under any Preferred Plus Plan (limited or unlimited number of head replacements, depending on the Preferred Plus Plan purchased). The life of the printhead will vary depending on the user's print volume, print patterns and heater temperature for print settings. Doing proper user maintenance of the printhead will help prolong its life.

⁶ For the latest drivers, visit www.epson.com/support/sseries

Redefining Solvent Ink Technology

Epson knows color. Having revolutionized professional photography, we've now brought that same focus to our SureColor S-Series printers. UltraChrome GS3 solvent inks not only provide outstanding color density and brightness, but accurate color as well. Our 4-color ink configurations offer one of the highest color gamuts in the industry. And, with the SureColor S80600 utilizing our unique Red and Orange solvent inks, sign makers no longer have to compromise color accuracy or gamut for production speed. When you add the ability to switch between White and Metallic Silver inks, you create a scenario where sign makers are only limited by their imagination, not by their printer.

Epson UltraChrome Ink Sets

1 2 3 4 5 6 7 8 9 10

Epson UltraChrome GS3
Epson SureColor S40600

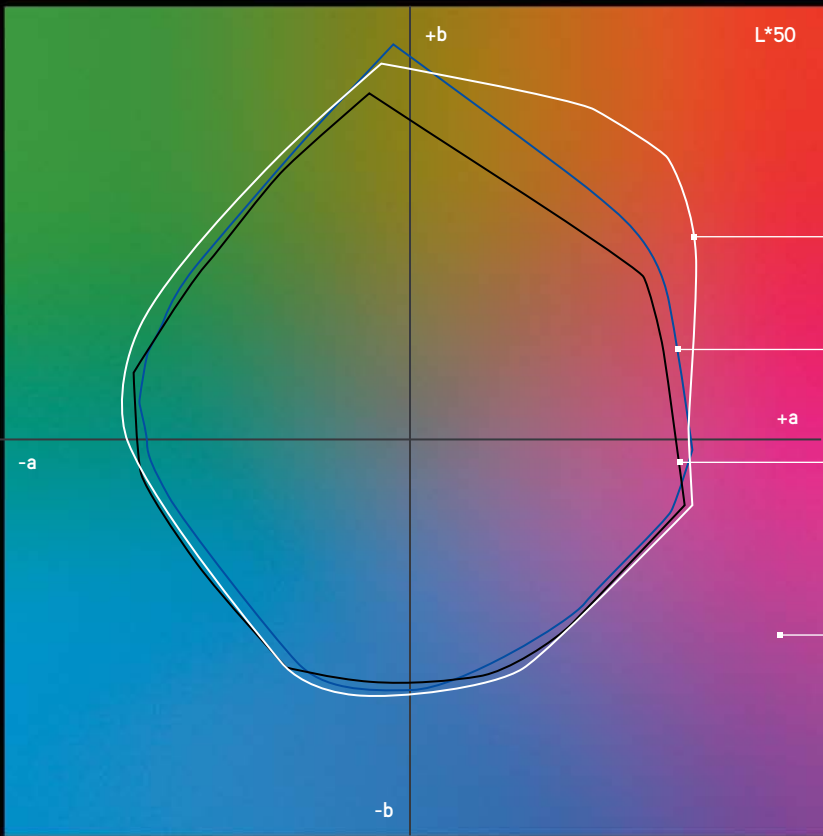


Epson UltraChrome GS3
Epson SureColor S60600



Epson UltraChrome GS3 with Red
Epson SureColor S80600





Epson UltraChrome GS3 with Red

Epson UltraChrome GS3

Typical Latex or Older-Generation Solvents

Extreme Color Gamut

Whether you're printing with the standard 4-color system or full 9 colors, you can have confidence that you are delivering the best possible quality to your customers. No other form of signage printing can match the overall print quality, gloss level and vibrancy of our UltraChrome GS3 Inks.

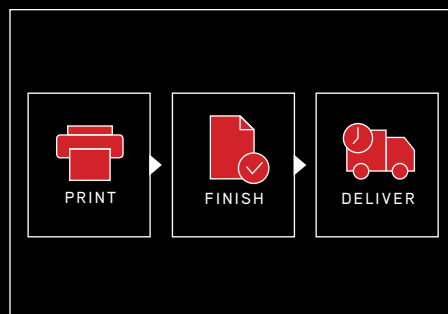
SureColor S-Series Rewards Program

An unprecedented program with unbeatable benefits. When using Genuine Epson consumables with your SureColor S-Series printer, you can earn discounted or free extended service coverage for up to 5 years.



Same-Day Lamination

S-Series printers are the first solvent printers to offer same-day lamination³. Epson UltraChrome GS3 Inks allow for final lamination only six hours after printing.



Environmentally Responsible

Our ink technology has achieved multiple certifications for indoor use, including Nordic Swan and GREENGUARD Gold Certification. In addition, no special ventilation or air purification is required⁴.



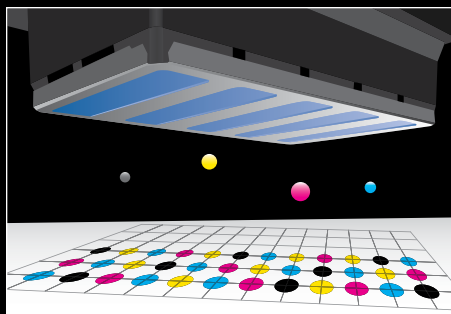
Advanced Printer Technology

Print quality has always been our passion at Epson. So, in order to continuously deliver the best print quality in the industry, we've incorporated our latest PrecisionCore TFP printhead in all SureColor S-Series printers. Our new solvent imaging technologies, like Epson Precision Dot Screening with Variable Droplet Technology capabilities, significantly reduce print grain and banding. Manufactured to work in harmony with our UltraChrome GS3 Inks, these PrecisionCore TFP printheads are the benchmark for commercial-level productivity with photographic image quality.



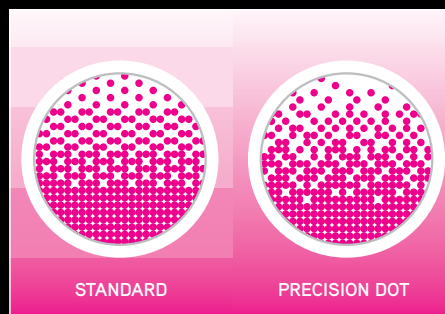
Epson Precision Dot Screening

Incredibly accurate control of the sizing, timing and placement of ink droplets — delivering best-in-class image quality and precise fine text.



Epson Precision Dot Microweave

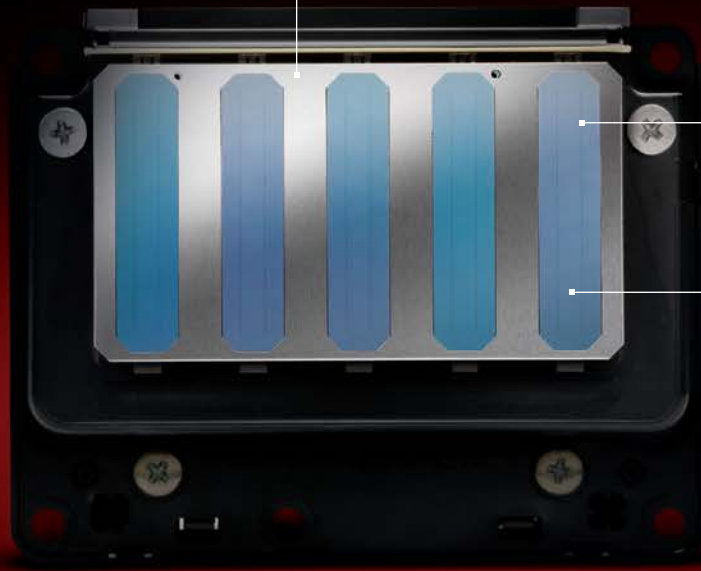
Capable of producing sellable-quality prints at up to 550 sq ft/hr¹, our innovative microweave technology delivers Epson quality at commercial-level print speeds.





Epson PrecisionCore TFP Printhead

Our most advanced printhead to date, the PrecisionCore TFP printhead, with Epson Precision Dot technology, can deliver significantly better-quality prints, faster and more reliably than virtually any other form of solvent-based printing.



Enhanced Variable Droplet Technology as small as 4.2 picoliters

Unique coating technology reduces the possibility of a nozzle clog

Powered by ONYX

Every SureColor S-Series printer comes with a copy of ONYX GamaPrint Pro, including support for sizing, tiling, nesting and more. Your SureColor S-Series Printer is a full solution right out of the box.



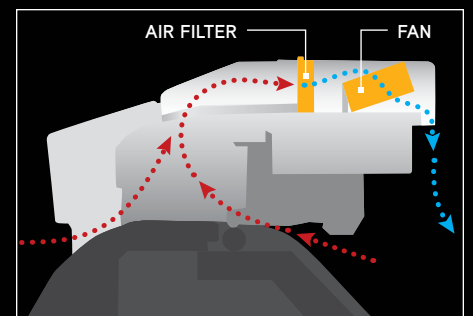
Auto Maintenance and Cleaning

By introducing a first-of-its-kind fabric wiping system, the SureColor S-Series automates the maintenance process to ensure your printer continues to operate at the high level you'd expect from an Epson product.



Air Filtration System

Working in harmony with the fabric wiper, the air filtration system removes contaminants from the environment to continuously keep internal printer components clean.



Robust Media Handling and Features

Our latest sign printers are among the fastest in their price class. This was achieved by designing a completely new precision media feeding and take-up system featuring optical sensors to ensure virtually any roll-based media would feed accurately, with less chance of buckling. A redesigned platen containing 40 large pinch rollers with adjustable tension, a sharper paper path that dramatically reduces media skewing, and an accurate take-up system are just a few of the innovations you'll see on the new SureColor S-Series printers. At over 100 lb heavier than previous S-Series printers, these models offer high productivity, roll after perfect roll.

Auto Head Alignment

A built-in sensor can automatically align the printhead quickly and accurately, while simultaneously ensuring accurate print lengths, job after job, roll after roll.



Redesigned Platen with LED Lights

A new platen with 40 large pinch rollers allows for incredibly accurate media feeding and print lengths. New LED lights with a clear cover give a full view of the print as it's being printed.





Gigabit Ethernet and USB 2.0

Dual Standard 110 V Power Compatibility

Precision Media Handling

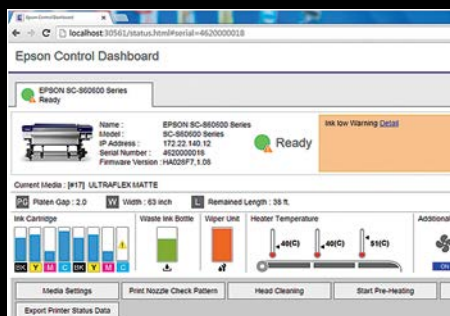
Automatic tension control with the ability to handle rolls up to 95 lb

Folding Heater

Fully Motorized Take-Up Reel with Media Tension Control (supports wind-in or wind-out)

Epson Control Dashboard

Operate your S-Series printer from your computer with the Epson Control Dashboard. Run cleanings, check ink levels, update firmware and download new media profiles directly from Epson.



Easy to Operate

Load, configure and set up new media with the touch of a button in under four minutes. Save up to 30 settings and easily switch between media — this could be the simplest printer in your shop.



World-Class Service and Support

The best customer support organization in the industry is only a phone call away and can help you operate your new S-Series printer.



Improved Outdoor Durability

Offering our highest outdoor durability to date, Epson UltraChrome GS3 Inks, with the 3M™ MCS™ warranty, give you added confidence in the durability of your S-Series prints.



Incredible Dot Accuracy

The PrecisionCore TFP printhead gives you the ability to create detailed small graphics, like stickers and labels. Combine the best in printhead technology with the widest available color gamut in the market.



High-Quality Vehicle Wraps

Brilliant, vibrant colors and same-day lamination³ set the S-Series apart from the competition in delivering the highest-quality vehicle wraps in the market.



Optional White and Metallic Silver Inks

With the ability to freely swap between White and Metallic Silver inks, the S80600 offers more differentiation from the competition. High-opacity UltraChrome GS3 White ink allows for faster production print speeds — up to 135 sq ft/hr¹.

S-Series

True Photographic Signage

New GS3 Red Ink

Truly differentiate yourself with the only Red ink available in the roll-to-roll signage market. Produce brilliant reds and be confident in delivering on tough-to-hit brand and corporate colors.

Consistent Color

Whether you're printing panels for a wall, a vehicle wrap, or outdoor signage, your SureColor S-Series printer will deliver consistent, vibrant color from job to job, panel to panel.



Epson SureColor S-Series Printer Specifications

Printing Technology

Advanced PrecisionCore TFP printhead⁵ with ink-repelling coating technology

Ink Type

Epson UltraChrome GS3 Solvent Ink:	
S40600	4-color ink configuration (C, M, Y, K)
S60600	8-color ink configuration (C, M, Y, K) x 2
S80600	10-color ink configuration (C, M, Y, K, LC, LM, LK, OR, R with optional MS, WT or CL)

Nozzle Configuration

Color and monochrome heads, up to 1,440 nozzles per color

Droplet Technology

Smallest droplet size 4.2 picoliters
Variable Droplet Technology can produce up to three different sizes per line

Maximum Resolution

1440 x 1440 dpi; 1440 x 720 dpi; 720 x 720 dpi; 720 x 360 dpi

Epson Intelligent Ink Cartridges²

Cartridge fill volume	Color – 700 mL; White – 600 mL; Metallic Silver – 350 mL
Ink cartridge shelf life	2 years from printed production date or 6 months after opened

Printer Interfaces

Includes as standard one USB 2.0 (1.1 compatible) and one Gigabit Ethernet port

ONYX GamaPrint Pro RIP Requirements

Server workstation	Windows [®] 8, 7, Windows Vista [®] or Windows XP (64-bit), 3.2 GHz Intel [®] i7 or better 6GB memory recommended
Client workstation	Macintosh [®] 10.5x, Windows 8, 7, Windows Vista or Windows XP (64-bit)

Weight and Dimensions (W x D x H)

Printer weight	615 lb (288 kg)
Dimensions	103" x 34" x 53" (2,616 mm x 609 mm x 1,346 mm)

Media Handling

Media input	Single roll-to-roll
Cut-sheet size	17" x 22" up to 64" wide
Media core	2" or 3" core
Input roll diameter	Up to 9.8"
Input roll weight	Up to 95 lb
Media thickness	From 45 gsm up to 1 mm thick
Take-up reel	Fully automatic "wind in" or "wind out" with tension bar
Output roll	Weight up to 95 lb

Media Heating System

Pre heater	Off or 86 ° to 122 °F
Platen heater	Off or 86 ° to 122 °F
Post heater	Off or 86 ° to 131 °F
Independently controlled via control panel or front-end RIP	

Printable Area and Accuracy

Max. paper width	64"
Min. paper width	10"
Left and right margins	0.2" (0.4" total)
Max. printable area	63.6"

Acoustic Noise Level

Approx. 59 dB according to ISO 7779

Environmental Characteristics

Temperature	
Operating	50 ° to 95 °F (10 ° to 35 °C)
Storage	-4 ° to 104 °F (-20 ° to 40 °C)
Relative Humidity	
Operating	20 – 80%
	40 – 60% (recommended)
Storage	5 – 85% (no condensation)

Electrical Requirements

Printer	Requires two 110 V outlets
Voltage	AC 110 – 120 V, AC 200 – 240 V
Frequency	50 – 60 Hz
Current	20 A at AC 110 – 120 V or 10 A at AC 200 – 240 V
Optional Dryer	
Voltage	AC 110 – 120 V, AC 200 – 240 V
Frequency	50 – 60 Hz
Current	1 A at AC 110 – 120 V or 0.5 A at AC 200 – 240 V

Power Consumption

Operating	Approx. 650 W or less
Standby	
Heaters On	Approx. 520 W
Heaters Off	Approx. 30 W or less
Power Off	Less than 0.6 W or less
Sleep Mode	Less than 3.5 W

Operating Systems Supported (Printer without RIP)⁶

Mac [®]	macOS [®] 10.12.x – Mac OS X [®] 10.7x
Windows	10, 8.1 and 7 (32-bit, 64-bit)

Product/Accessories

Product/Accessories	Part Number
Epson SureColor S80600	SCS80600PE
Epson SureColor S60600	SCS60600PE
Epson SureColor S40600	SCS40600PE
Ink Cleaner	T699300
Printer Maintenance Kit	C13S210044
Additional Waste Ink Bottle	C13T724000
Additional Cleaning Cartridge	T696000

Epson UltraChrome GS3 Ink

	Single	Multipack
Black ink cartridge	T890100	T89010V
Cyan ink cartridge	T890200	T89020V
Magenta ink cartridge	T890300	T89030V
Yellow ink cartridge	T890400	T89040V
Light Cyan ink cartridge	T890500	T89050V
Light Magenta ink cartridge	T890600	T89060V
Light Black ink cartridge	T890700	T89070V
Orange ink cartridge	T890800	T89080V
Red ink cartridge	T890900	T89090V
White ink cartridge	T890A00	
Metallic Silver ink cartridge	T890B00	

Epson UltraChrome GS3 Ink (3M MCS)

	Part Number
Black ink cartridge	T922100
Cyan ink cartridge	T922200
Magenta ink cartridge	T922300
Yellow ink cartridge	T922400
Light Cyan ink cartridge	T922500
Light Magenta ink cartridge	T922600
Light Black ink cartridge	T922700

Extended Service Plans

Part Number	
S40600	
Epson Preferred Plus Service	
Silver	EPPS30SB1
Gold	EPPS30GB1
Platinum	EPPS30PB1
S60600/S80600	
Epson Preferred Plus Service	
Silver	EPPS5070SB1
Gold	EPPS5070GB1
Platinum	EPPS5070PB1

Better Products for a Better Future™

eco.epson.com

EPSON
EXCEED YOUR VISION

Epson America, Inc. 3840 Kilroy Airport Way, Long Beach, CA 90806
Epson Canada Limited 185 Renfrew Drive, Markham, Ontario L3R 6G3
Please visit us at proimaging.epson.com

Distributed by:

 **National Sales & Support**
866-Ink-Jets itnh.com
(465) (5387)

EPSON ULTRACHROME
GS3^{INK}

EPSON ULTRACHROME
GS3^{INK}
RED



EPSON, PrecisionCore, SureColor, TFP and UltraChrome are registered trademarks, EPSON Exceed Your Vision is a registered logomark and Better Products for a Better Future is a trademark of Seiko Epson Corporation. Epson Preferred is a service mark of Epson America, Inc. Mac, Macintosh, macOS and OS X are trademarks of Apple Inc., registered in the U.S. and other countries. Windows and Windows Vista are either registered trademarks or trademarks of Microsoft Corporation in the United States and/or other countries. All other product and brand names are trademarks and/or registered trademarks of their respective companies. Epson disclaims any and all rights in these marks. Copyright 2017 Epson America, Inc. CPD-50665R1 XXX 6/17